



# Introduction to searching the ProQuest platform

**DANIELA CASON | NOVEMBER 2025**

# Session Objectives

**At the end of the session, you will be able to**

- Apply ProQuest basic and advanced search features in AMED with some applications
- Use the AMED Thesaurus
- translate searches from OVID to ProQuest



# Navigate the platform and basics of the search

The screenshot shows the ProQuest navigation menu for the Allied & Complementary Medicine section. The menu is displayed in a dark teal color with white text. The 'ProQuest' logo is at the top left. A red box highlights the hamburger menu icon (three horizontal lines) in the top left corner. Below the icon, the text 'Allied & Complementary Medicine' is displayed. Underneath, there are four menu items: 'Basic Search', 'Advanced Search', 'Change databases', and 'Help'. A search bar with the placeholder text 'Enter search terms...' is visible at the bottom right of the menu.

ProQuest

☰

**Allied & Complementary Medicine**

Basic Search    Advanced Search

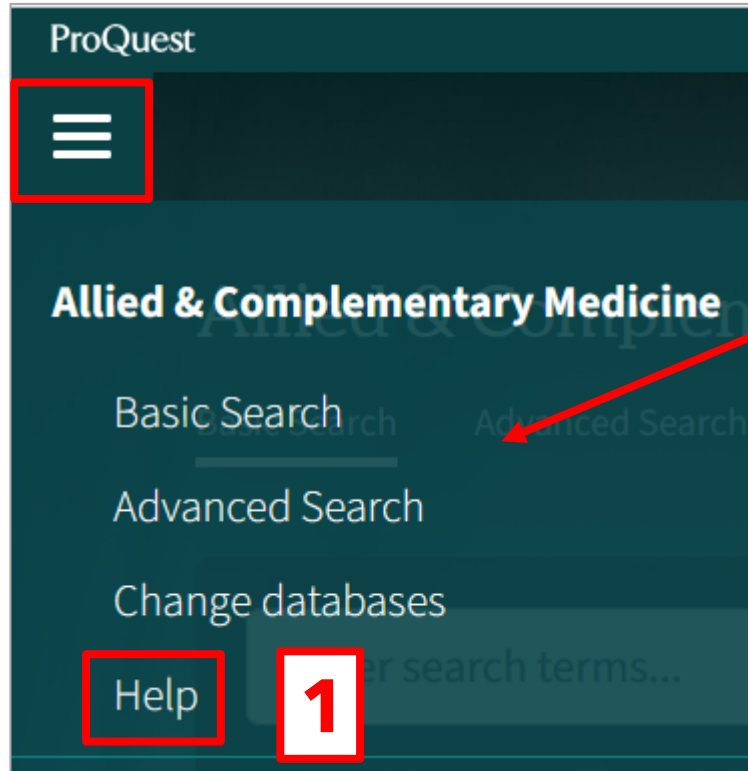
Advanced Search

Change databases

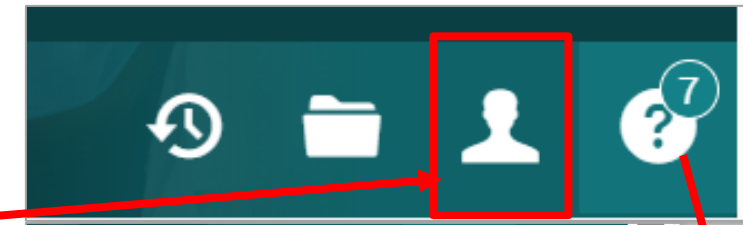
Help

Enter search terms...

# Platform navigation and components

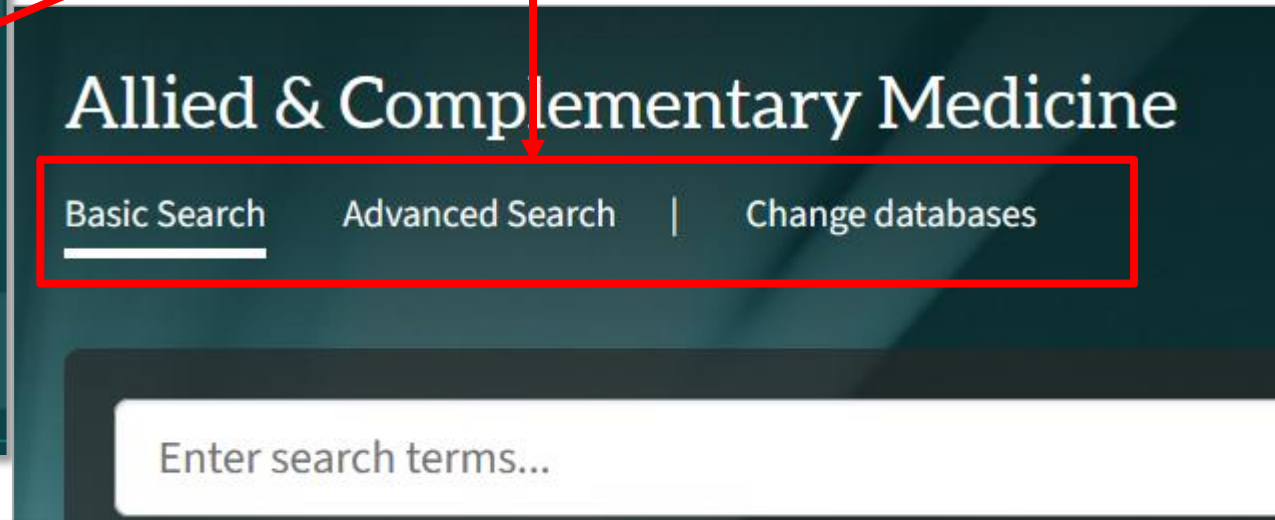


Customization Options

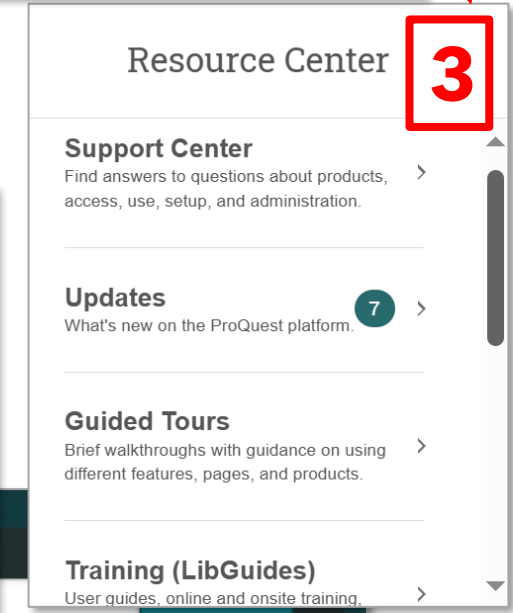


My Research and Language Selection

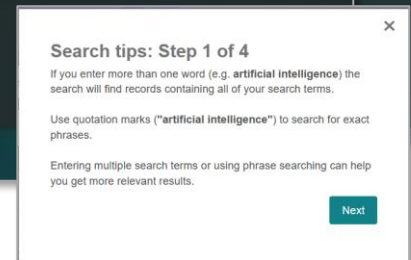
Various levels



3



- 1 - Extensive Online Help
- 2 - Pop-up Tips
- 3 - Other external support resources, LibGuides



Search tips

2



# Allied & Complementary Medicine

## Basic Search

Basic Search | [Advanced Search](#) | [Change databases](#)

WEIGHT LOSS DRUGS



[Search tips](#)

The Allied and Complementary Medicine Database is a specialized bibliographic database produced by the Health Care Information Service of the British Library. It's designed for researchers, students, medical professionals, and health practitioners interested in alternative and allied therapies. Coverage includes complementary and alternative medicine, occupational therapy, palliative care, physiotherapy, podiatry, rehabilitation, speech and language therapy. The database includes abstracts dating back to 1985, with new content added monthly.

[Want to Learn More?](#)

Try one of these options:

WEIGHT LOSS DRUGS

# Display abstracts in Results page

Did you mean WEIGHT LOSS **drug**?

Modify search Recent searches Save search/alert

426 results

Sorted by  
Relevance

Publication date  
1987 - 2024 (decades)



Enter a date range Update

Select 1-50 [Quote] [Email] [Print] [More]

Show Abstracts

1 Principal component analysis of synthetic adulterants in herbal supplements advertised as **weight loss drugs**   
Dastjerdi, A G; Akhgari, M; Kamali, A; Mousavi, Z. **Complement Ther Clin Pract** Vol. 31, Iss. NA, (2018): 236-241. Citation/Abstract

...to treat obesity. Unfortunately the majority of herbal **weight loss drugs** are...  
...**loss drugs** for the general search for pharmaceuticals. Methods sixty one herbal...  
...Herbal **weight loss** products were adulterated with controlled and legitimate...

Abstract/Details Times cited 2 on ProQuest

## Show Abstracts toggle

2 **Drugs for weight loss: Feet, forks and our inner fish**   
Katz, D. **Pharm J** Vol. 294, Iss. 7865, (Jun 6, 2015): 593-4. Citation

Details

WEIGHT LOSS DRUGS

# Display abstracts in Results page

Did you mean WEIGHT LOSS **drug**?

Modify search Recent searches Save search/alert

426 results

Sorted by  
Relevance

Select 1-50 [Quote] [Email] [Print] [More]

Show Abstracts

- Publication date
- Author
- Publication title
- Subject
- Document type
- Language

Scholarly Journal

**Principal component analysis of synthetic adulterants in herbal supplements advertised as weight loss drugs**

<sup>1</sup>  
Dastjerdi, A G; Akhgari, M; Kamali, A; Mousavi, Z. **Complement Ther Clin Pract** Vol. 31, Iss. NA, (2018): 236-241.

...to treat obesity. Unfortunately the majority of herbal **weight loss drugs** are...  
...**loss drugs** for the general search for pharmaceuticals. Methods sixty one herbal...  
...Herbal **weight loss** products were adulterated with controlled and legitimate...

Abstract/Details Times cited 2 on ProQuest

**Abstract:** Abstract: Objective: Obesity is one of the major problems in many countries. Herbal **drugs** are widely used to treat obesity. Unfortunately the majority of herbal **weight loss drugs** are adulterated with active pharmaceutical ingredients. The purpose of the present study was to analyse herbal **weight loss drugs** for the general search for pharmaceuticals. Methods sixty one herbal **weight loss drugs** that were collected from herb shops and internet in Kermanshah, Iran were analysed qualitatively using gas chromatography/mass spectrometry. Results: Of the 61 **weight loss** products sampled, 72% were found to be adulterated with tramadol, caffeine, fluoxetine, rizatriptan, venlafaxine and methadone. Conclusion: Herbal **weight loss** products were adulterated with controlled and legitimate **drugs**. Patients should be aware of the danger of using adulterated supplements. Highlights: Herbal slimming **drugs** were adulterated with active pharmaceutical ingredients. Legitimate and controlled **drugs** were detected in herbal **weight loss drugs**. Use of adulterated **drugs** is life threatening even though in low doses.

## Narrow Filters

# Advanced Search

Command Line Thesaurus Field codes Search tips

in

AND  in

+ Add a row

Limit to:  Full text  Peer reviewed ⓘ

Publication date:

**Multi Database search form**

Source type:  Select all

- Artistic & Aesthetic Works
- Audio & Video Works
- Blogs, Podcasts, & Websites
- Books
- Conference Papers & Proceedings
- Dissertations & Theses
- Encyclopedias & Reference Works

Document type:  Select all

- Accounting & Tax Standard
- Advertisement
- Annual Report
- Archival/News Footage
- Article
- Audio/Video Clip
- Back Matter

Language:  Select all

**Language**

**Help with the available searchable fields**

**Advanced Search**

**Single Database search form**

# Advanced Search

Command Line Thesaurus Field codes Search tips

in

AND  in

+ Add a row

Publication date:

Language:  Select all

- Afrikaans
- Chinese
- Croatian
- Czech
- Danish
- Dutch
- English

Result page options ^

Sort results by:

Items per page:

Exclude duplicate documents ⓘ

Include: ⓘ  Spelling variants for your search terms

Form variants for your search terms

Show variants on Results page

Anywhere

- Anywhere
- Anywhere except full text — NOFT
- Abstract — ABSTRACT
- Author — AUTHOR
- Author affiliation — AF
- Document title & abstract — TIAB
- Document title — TITLE
- Publication title — PUBLICATION
- Subject — SUBJECT

Search Clear form

Search Clear form

# Supports Field Searching

## Advanced Search

Command Line

Thesaurus

Field codes

Search tips

WEIGHT LOSS DRUGS

in

Document title & abstract — TIAB

AND

ADVERSE EFFECTS

in

Anywhere

+ Add a row

Publication date:

All dates

- AND
- AND**
- OR
- NOT

- Anywhere
- Anywhere**
- Anywhere except full text — NOFT
- Abstract — ABSTRACT
- Author — AUTHOR
- Author affiliation — AF
- Document title & abstract — TIAB
- Document title — TITLE
- Publication title — PUBLICATION
- Subject — SUBJECT

Search



tiab(WEIGHT LOSS DRUGS) AND (ADVERSE EFFECTS) **Search Field syntax**

Did you mean tiab(WEIGHT LOSS **drug**) AND (ADVERSE EFFECTS)?

19 results

**FieldLabel(search terms)**  
**E.g. title(asthma)**

[Modify search](#) [Recent searches](#)


Sorted by

Relevance

Publication date

1999 - 2021 (years)

Select 1-19

- 1
 

Scholarly Journal

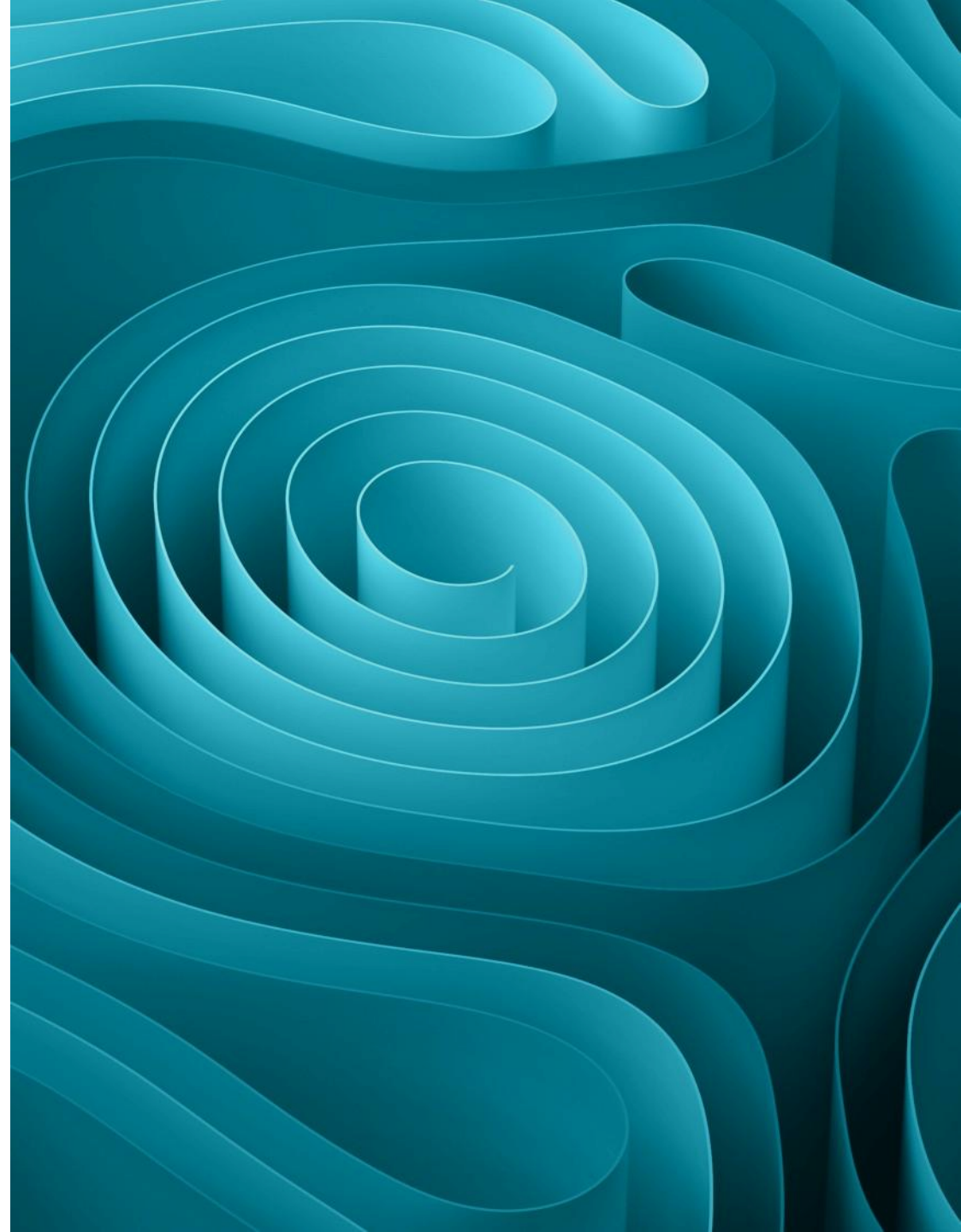
Chinese herbal medicine, Guilu Erxian Glue, as alternative medicine for **adverse side effects** of chemotherapy in doxorubicin-treated cell and mouse models

Lien CY; Lu, C W; Lin, Y H; Wu, W J; Hsu, CH; et al. **Evid Based Complement Alternat Med** Vol. 2021, Iss. NA, (2021): 5548968.

...a chemotherapeutic drug, often causes many **adverse side effects** in patients...  
 ...treatment for DOX-induced **adverse side effects**. In this study, we evaluated...  
 ...considerably fewer side **effects**. We expected that GEG could serve as a...

[Abstract/Details](#) [Access full text](#)

# Search Syntax Basics Variants & Logical operators



# Automatic Retrieval of Word Variants

## Singular and plural

- NURSE → NURSES
- CHILDREN → CHILD

## Comparative and superlative

- TALL → TALL, TALLER, TALLEST
- GOOD → GOOD, BETTER, BEST

# Automatic Retrieval of Word Variants

## US and British English spelling

• COLOR



COLOUR

• DEFENSE



DEFENCE

## Contemporary and old English

• SING



SYNG

# Term and Phrase Searching

Space between words = AND searching

- SKIN CANCER
  - SKIN AND CANCER
- SKIN CANCER, SKIN CANCERS, SKIN LESIONS IN BREAST CANCER

Quotation marks for exact phrase or term = no retrieval of variants

"SKIN CANCER"



SKIN CANCER

*Exact!*

"CHILD"

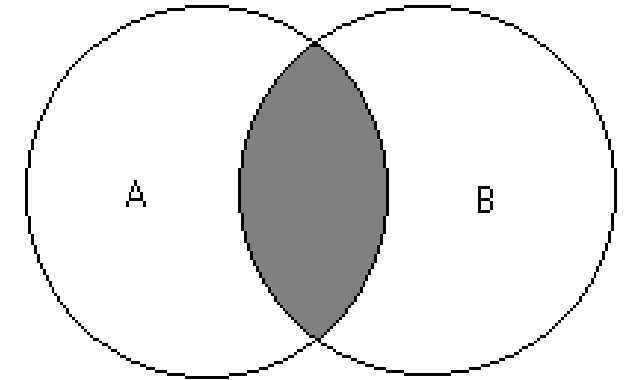


CHILD

# Boolean Operators summary

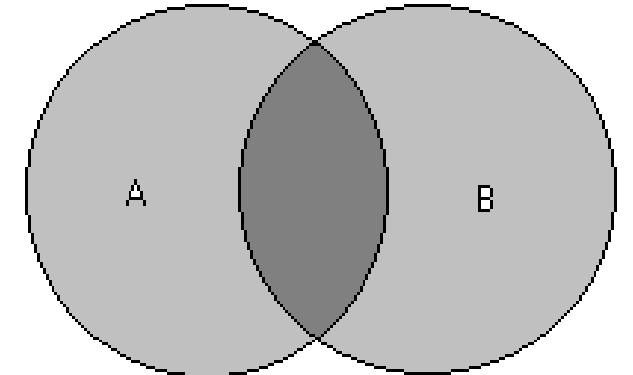
**AND** - All the words **MUST** be present.

RADIATION **AND** CHERNOBYL **AND** CHILDREN



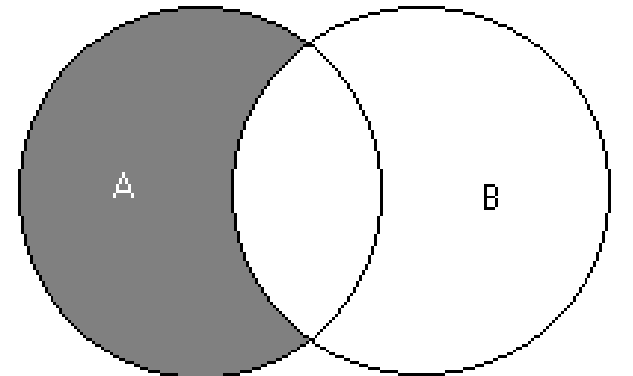
**OR** - Any of the words **CAN** be present

UNIVERSITY **OR** COLLEGE **OR** "HIGHER EDUCATION"

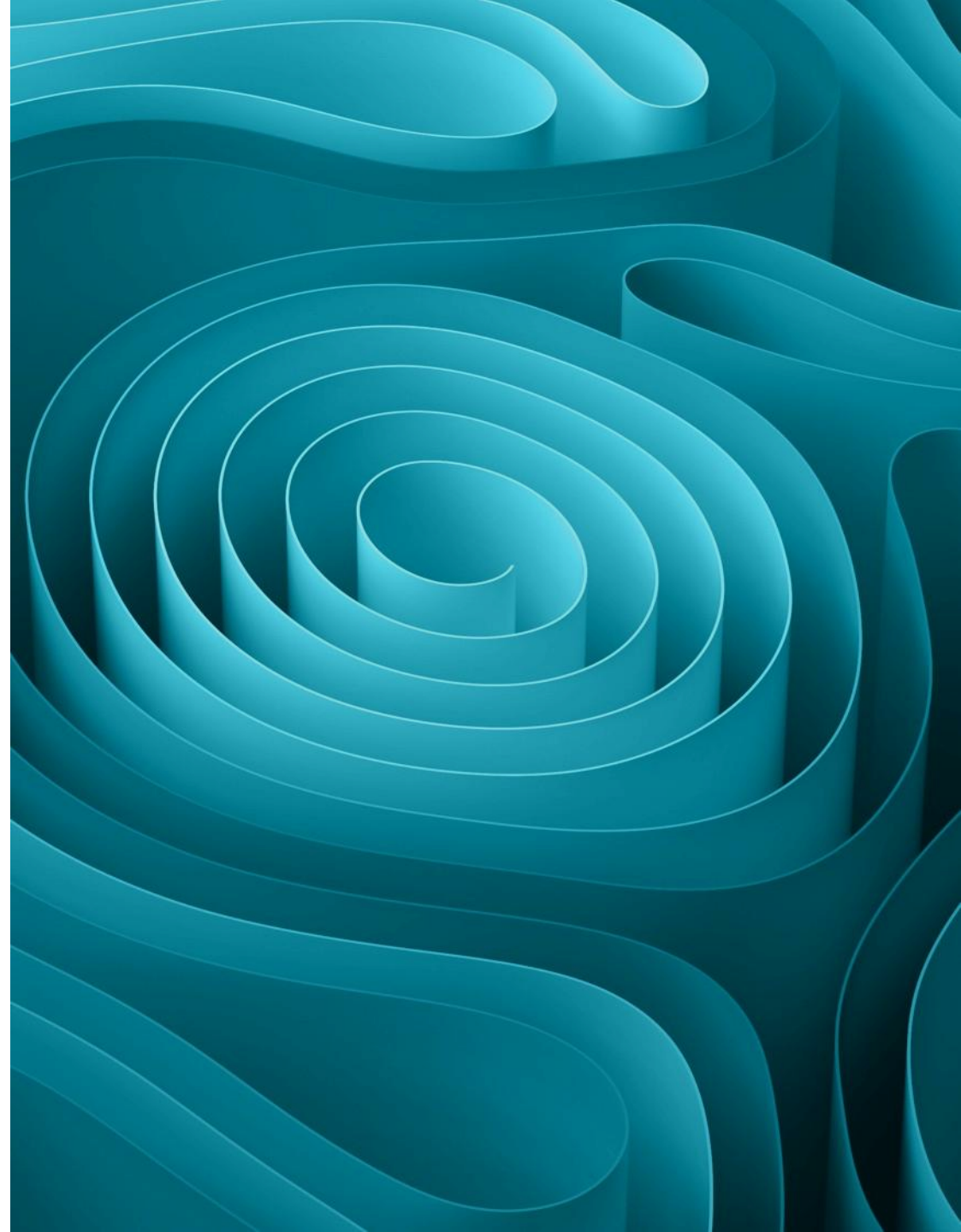


**NOT** - The first word is present,  
excluded the word following **NOT**.

MERCURY **NOT** PLANET



# Truncation



## Truncation (when something more than the variants is needed)

- \* retrieves up to 5 characters at the end or middle of a word

ECONOM\* → ECONOMY, ECONOMICS, ECONOMICAL  
TOX\*C → TOXIC, TOXIGENIC

- [\*n] retrieves up to the number of characters specified (max 20)

ECONOM[\*3] → ECONOMY, ECONOMICS  
⊘ not ECONOMICAL  
TOXIC[\*4] → TOXIC, TOXICITY,  
⊘ not TOXICOLOGY  
ECONOM[\*6] → includes ECONOMICALLY  
TOXIC[\*7] → includes TOXICOLOGIST

☰ Allied & Complementary Medicine

WEIGHT AND LOS\* AND DRUG

449 results

☰ Allied & Complementary Medicine

WEIGHT AND LOS\* AND (MANAGEMENT OR DRUG)

593 results

☰ Allied & Complementary Medicine

WEIGHT AND LOS\* AND (MANAGE\* OR DRUG)

602 results

# Order of Execution

1. PRE
2. NEAR
3. ( )
4. AND
5. OR
6. NOT

ProQuest follows a **default order** when interpreting a search that uses operators to combine search terms.

dog OR cat AND food OR nutrition

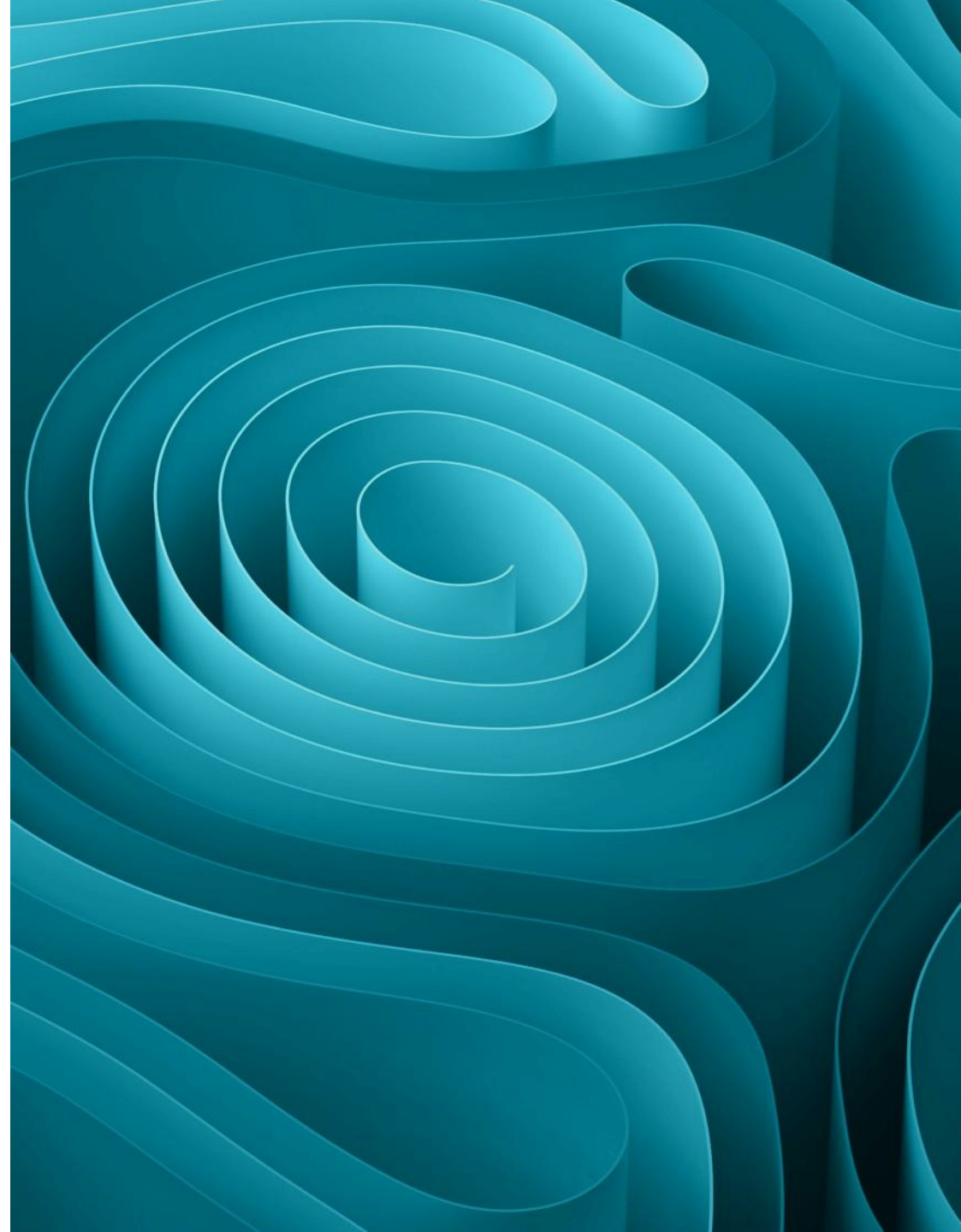
Without brackets by default it is searched as if it was

(cat AND food) OR dog OR nutrition

**Use parentheses to override the default order of processing**

(dog or cat) AND (food or nutrition)

# Proximity Operators



# Proximity Operators

**PRE** (same order)

**NEAR** (any order)

retrieve the search terms if separated by **maximum 4** intervening words

**PRE/#** (p/#)

**NEAR/#** (n/#)

adding a number after a slash / changes the default of 4 words to less or more E.g. **P/1** **N/3**

both can be used with **0** = NO intervening words

**P/0** will search for the pure adjacency with **variants on**:

**breast P/0 neoplasm** retrieves more than **"breast neoplasm"** as it includes **breast neoplasms**

# Proximity Operators examples

**Attention pre/3 Disorder** = > **Attention deficit hyperactivity Disorder**  
**But not Disorder with Attention deficit**

**Cancer near/2 Research** = > **Cancer defeated by Research**  
**Researches on Cancer**

**Skin near/2 Cancers** = > **Cancer of the Skin**      **Skin Cancers**

If either operator must be used as a search term, use the Exact quotes:  
"pre" p/0 partum (or "pre partum") or "near"

# Using proximity operators

☰ Allied & Complementary Medicine

WEIGHT NEAR LOS\* NEAR (MANAGE\* OR DRUG)

17 results

Drugs for weight loss: Feet, forks and our inner fish

Katz, D. **Pharm J** Vol. 294, Iss. 7865, (Jun 6, 2015): 593-4.

Details

Yoga as an alternative therapy for weight management in child and adolescent obesity: A systematic review and implications for research

Dai CL; Sharma, L; Chen, C C; Yesilyurt, E; Godbey, S. **Altern Ther Health Med** Vol. 27, Iss. 1, (Jan 2021 - Feb 2021): 48-55.

Abstract/Details

Principal component analysis of synthetic adulterants in herbal supplements advertised as weight loss drugs

Dastjerdi, A G; Akhgari, M; Kamali, A; Mousavi, Z. **Complement Ther Clin Pract** Vol. 31, Iss. NA, (2018): 236-241.

Abstract/Details

Times cited

2 on ProQuest

Effects of integrated health management intervention on overweight and obesity

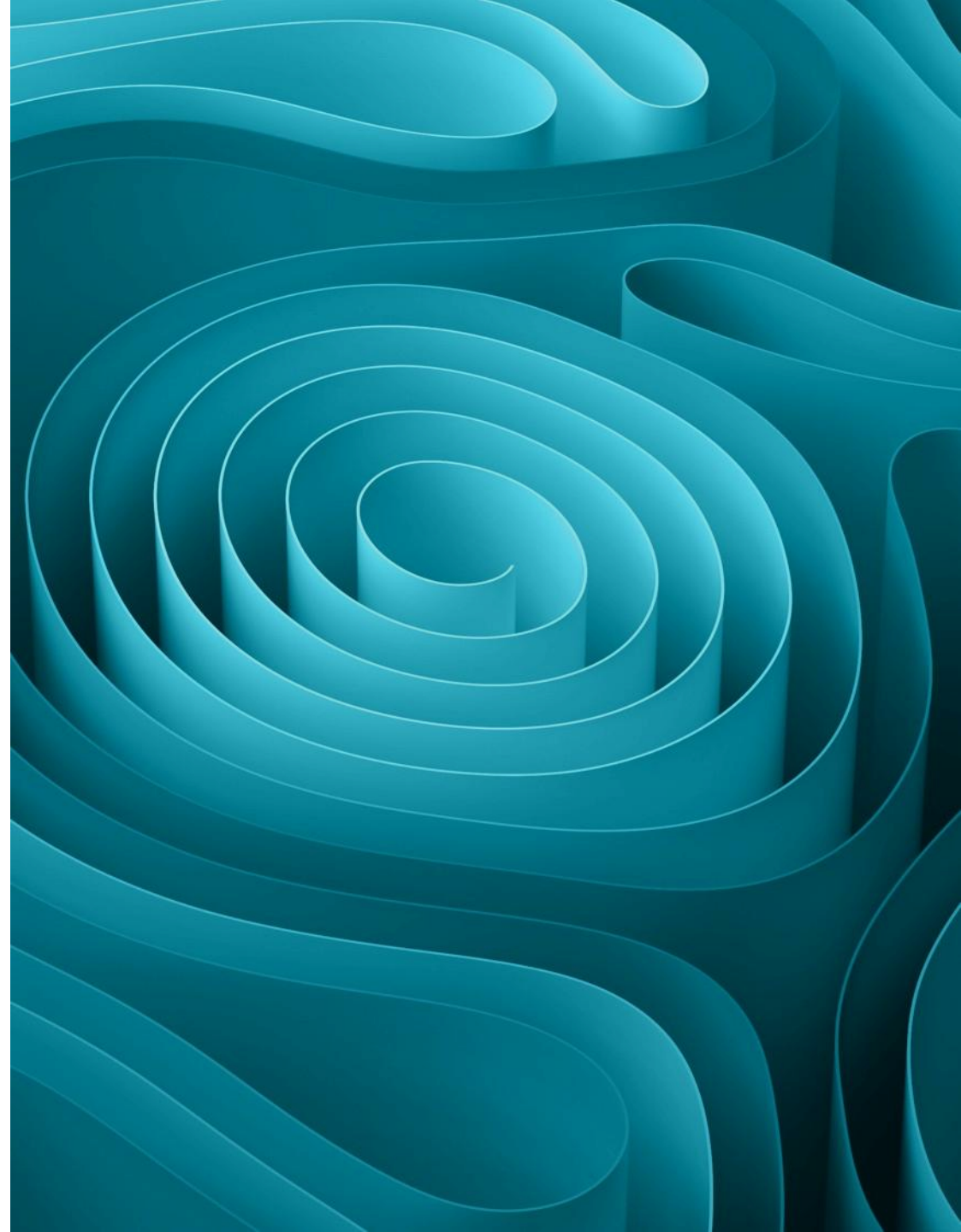
Yang, Y; Ma, C W; Wang, X; Lin, X; Fu L; et al. **Evid Based Complement Alternat Med** Vol. 2017, Iss. NA, (2017): 1239404.

Abstract/Details

Access full text 


Set <sup>▲</sup>	Search	Databases	Results
S1	⊕ WEIGHT LOSS DRUGS	Allied & Complementary Medicine	426°
S2	⊕ WEIGHT LOSS DRUG	Allied & Complementary Medicine	426°
S3	⊕ WEIGHT AND LOSS AND DRUG	Allied & Complementary Medicine	426°
S4	⊕ WEIGHT AND LOS* AND DRUG	Allied & Complementary Medicine	449°
S5	⊕ WEIGHT AND LOS* AND (MANAGEMENT OR DRUG)	Allied & Complementary Medicine	593°
S6	⊕ WEIGHT AND LOS* AND (MANAGE* OR DRUG)	Allied & Complementary Medicine	602°
S7	⊕ WEIGHT NEAR LOS* NEAR (MANAGE* OR DRUG)	Allied & Complementary Medicine	17°

# Postprocessing the results




# Cite

Select 1-50 **3 Selected items** Clear

1  **Nervous System Diseases and Conditions** and **Conductivity** treatment needs of people with **motor neuron disease**. *Health & Medicine Week; Atlanta* [Atlanta] ...stated, "People with **motor neurone disease** ...Australia and New Zealand, Dentistry, **Motor** ...this research see: Oral health and dental treat

Abstract/Details Full text

2  **Neurodegenerative Diseases and Conditions** **Neuron Disease** (Factors to consider for **motor neuron disease**). *Health & Medicine Week; Atlanta* [Atlanta] ... For more information on this research see: F ... **Motor Neuron Disease**. According to news r research stated. "The experience of caregiving

3  **Conductivity** **Neuron Disease** (Factors to consider for **motor neuron disease**). *Health & Medicine Week; Atlanta* [Atlanta] ... For more information on this research see: F ... **Motor Neuron Disease**. According to news r research stated. "The experience of caregiving

**Create Bibliographic Citations for your paper. Select the titles then click on 'Cite'.**

## Cite

Items selected: 3  Deselect items when done

### Copy citations directly into your paper

AMA - American Medical Association, 10th Edition

1. Neurodegenerative diseases and conditions - motor neuron disease; studies from C. gloyas et al add new findings in the area of motor neuron disease (factors to consider for motor neurone disease carer intervention research: A narrative literature review). *Health & Medicine Week*. Feb 03 2017:4580. Available from: <https://www.proquest.com/wire-feeds/neurodegenerative-diseases-conditions-motor/docview/1861924923/se-2?accountid=164953>.

2. Nervous system diseases and conditions; studies from C.M. tay et al provide new data on motor neuron disease (oral health and dental treatment needs of people with motor neurone disease) (oral health and dental treatment needs of people with motor neurone disease). *Health & Medicine Week*. Sep 26 2014:4142. Available from: <https://www.proquest.com/wire-feeds/neurodegenerative-diseases-conditions-motor/docview/1861924923/se-2?accountid=164953>.

**RefWorks** Consult RefWorks [style guidelines](#) to check the accuracy and completeness of your citations.

### Export to a citation manager or file



RefWorks



EndNote, Citavi, etc.



NoodleTools



EasyBib




Microsoft Excel Format

OR


Copy


# Email

Select 1-50   3 Selected items   Clear

1  **Nervous System Diseases and treatment needs of people with Health & Medicine Week; Atlanta [A**  
...stated, "People with motor neurone  
...Australia and New Zealand, Dentistry,  
...this research see: Oral health and den

[Abstract/Details](#)   [Full text](#)

2  **Neurodegenerative Diseases and Neuron Disease (Factors to con Health & Medicine Week; Atlanta [A**  
... For more information on this research  
... Motor Neuron Disease. According to  
research stated. "The experience of ca

3  **relation with underlying cause of Health & Medicine Week; Atlanta [A**

**Send selected results by email**

## Email

Items selected: 3    Deselect items when done

**Required \***

Content: (where available)   Full text (citation, abstract, full text, images, indexing) ▾  
Original file formats (e.g., PDF, video, presentation, spreadsheet) will not be saved.

Bibliography:    Include bibliographic citations at the end

Citation style:   AMA - American Medical Association, 10th Edition ▾





Include:

- Recent searches
- Cover page/header
- Table of contents
- Document numbering





Email addresses: \*   myemail@gmail.com  
Email addresses entered here will only be used to send your email. Use a comma or semicolon to separate email addresses. Each recipient will see their own email address only.

Your name: \*  
Used to let others know who sent the email.

Search   Recent searches   Save search/alert ▾





**se (Oral health and dental motor neurone disease)**   Full Text

**Email**

**ings in the Area of MOTOR**   Full Text

**e review)**

**Save to My Research**

# Email

**Can include the search history, the ToC and document numbers in the email. Plus the bibliography at the end. If available, the original pdf can also be delivered.**

## Your ProQuest Research



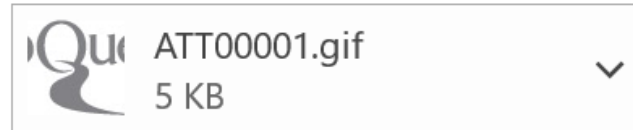
noreply@proquest.com

To Daniela Cason



19:37

Click here to download pictures. To help protect your privacy, Outlook prevented automatic download of some pictures in this message.



Email 1 of 1

### Table of contents

- [1. 235 Epidemiology of motor neurone disease in wales](#)
- [2. Neurodegenerative Diseases and Conditions - Motor Neuron Disease; Studies from C. Gluyas et al Add New Findings in the Area of Motor Neuron Disease \(Factors to consider for motor neurone disease carer intervention research: A narrative literature review\)](#)
- [3. Nervous System Diseases and Conditions; Reports Summarize Motor Neuron Disease Findings from King's College \(Place of death, and its relation with underlying cause of death, in Parkinson's disease, motor neurone disease, and multiple sclerosis: a population-based study\)](#)

Document 1 of 3

#### 235 Epidemiology of motor neurone disease in wales

**Author:** Saad, Toni; Dawson, Ken; Hirst, Claire; Baker, Idris; Lowman, Andrea; Wardle, Mark; Harding, Katharine

**Publication info:** Journal of Neurology, Neurosurgery and Psychiatry ; London Vol. 90, Iss. 12, (Dec 2019): e58.

# Saving Results options

Finally, you can save the results in various ways, to further evaluate them:

- 1 - you can save the documents and arrange them in folders in My Research
- 2 - you can export the records in RefWorks, EndNote or another Reference Manager
- 3 - you can print or save the results on your pc in various formats

## All save & export options

**MOST POPULAR**

- Cite
- Email
- Save to My Research

**CITATION EXPORT**

- RefWorks
- EndNote
- RIS  
Citavi, Mendeley, etc.
- NoodleTools
- EasyBib

**OTHER OPTIONS**

- Request items
- Print
- PDF
- XLS  
Microsoft Excel Format
- RTF  
Microsoft Word Format
- TXT  
Text only

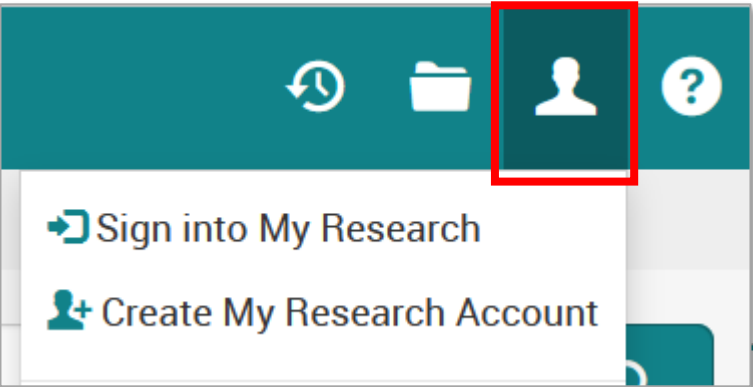
Close

Select 1-50 3 Selected items

All save & export options

- 1  Drug-induced asthma: a review  
Ribon, A; Parikh, S; National Librar  
Abstract/Details 360 LINK to Full Text  
Scholarly Journal
- 2  IgE-mediated allergic reaction  
Kitani, H; Kajimoto, K; Sugimoto, K  
Abstract/Details 360 LINK to Full Text  
Scholarly Journal
- 3  Celecoxib, a highly selective C  
Martín-García, C; Hinojosa, M; Ber  
(2003): 20-25.  
Abstract/Details 360 LINK to Full Text  
Scholarly Journal

# Other save options My Research



A teal header bar contains icons for a clock, a folder, a person, and a question mark. The person icon is highlighted with a red box. A dropdown menu is open, showing two options: 'Sign into My Research' with a right-pointing arrow icon, and 'Create My Research Account' with a person icon and a plus sign.


Browse Databases (269)

- Options to
1. store documents online,
  2. save searches
  3. create alerts
- require registering to My Research

1




Save to My Research

Full Text 

- Save search/alert
- 2 Save search
  - 3 Create alert
  - Create RSS feed
  - Get search link

Select 1-50 1 Selected item Clear

1    
Scholarly  
Journal

Health related quality of life in Parkinson's disease: A systematic review of disease specific instruments

Marinus, J; Ramaker, C; van Hilten, J. J; Stiggelbout, A. M.  
**Journal of Neurology, Neurosurgery & Psychiatry** Vol. 72, Iss. 2, (Feb 2002): 241-248.

Abstract/Details Full text Cited by (112) References (30) Show Abstract ▾

Stigma and Alzheimer's disease : A systematic ...  
Werner Perla In *The*

# My Research options

The screenshot shows the ProQuest user interface. At the top, the ProQuest logo is on the left, and the user profile icon is on the right, highlighted with a red box. Below the logo, navigation links for 'Basic Search', 'Advanced Search', 'Publications', 'Browse', and 'Databases (269)' are visible. The main content area is titled 'My Research' and features a horizontal menu with tabs for 'Documents (142)', 'Searches (58)', 'Alerts (7)', 'RSS feeds (0)', 'Widgets', and 'Account'. The 'Documents (142)' tab is highlighted with a red box. Below this, the folder is set to 'All documents (142)'. A dropdown menu for 'Sort by:' is set to 'Date added'. A toolbar contains options like 'Add to folder', 'Delete', 'Cite', 'Email', 'Print', and 'Save'. A document titled 'Un'Idea Luminosa' is listed with a checkbox and a document icon. On the right side, a 'My Research' dropdown menu is open, listing options such as 'Saved documents', 'Saved searches', 'Alerts', 'RSS feeds', 'Account', 'Preferences', 'Bookshelf', 'Exit ProQuest', and 'English'. This menu is also highlighted with a red box.

ProQuest

Access provided by

Basic Search Advanced Search Publications Browse Databases (269)

## My Research

Documents (142) Searches (58) Alerts (7) RSS feeds (0) Widgets Account

Folder: All documents (142)

All Documents

Select items 1-50  Add to folder  Delete  Cite  Email  Print  Save

1 Un'Idea Luminosa

Chiamulera, Francesco. **Vogue Italia; Milan** Iss. 842, (Nov 2020): 186-187.

Sort by:

Date added

View

All Documents  
Documents not in a folder

My Research

- Saved documents
- Saved searches
- Alerts
- RSS feeds
- Account
- Preferences
- Bookshelf
- Exit ProQuest
- English



# Export Results

# Export Results option

Bulk download the bibliographic information of hundreds of results



Allied & Complementary Medicine

[S5] OR [S4] OR [S3]

5,037 results

- Available when connected to My Research
- Allows bulk exporting up to 20,000 records.
- Available 10 attempts per day (20K x 10).
- Export of bibliographic citation only + abstract



 Export Results

See more about **My Research** in the Appendix

**More about Export Results:**

**[https://www.proquest.com/help/academic/webframe.html?Saving\\_searches.html#Export\\_Results.html](https://www.proquest.com/help/academic/webframe.html?Saving_searches.html#Export_Results.html)**

# Export Results option

[S5] OR [S4] OR [S3]

5,037 results

” ✉ 📁 ⋮

[Export Results](#)

## Export Results

Available downloads: 9 of 10

~~Save search for later~~

Select format

RIS

Include abstracts  Yes  No

Terms and Conditions

[Accept](#) [Cancel](#)

**3 Available formats:**

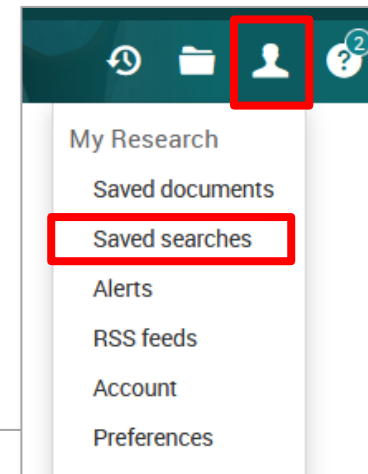
Select format

- RIS
- Csv
- Tsv

Click on **Accept** at the bottom of the window. A search is automatically saved in **My Research**. Go to **My Research** to retrieve the results.

# Export Results option

**Go to the Saved Search in My Research**



A user profile menu is open in the top right corner. The menu items are: My Research, Saved documents, Saved searches, Alerts, RSS feeds, Account, and Preferences. The 'Saved searches' item is highlighted with a red box. The user profile icon in the top right is also highlighted with a red box.

Name	Search terms	Databases	Notes	Saved on
MND OR ALS DRUG THERAPY	((TIABSU(DRUG NEAR/2 (THERAPY OR TREAT* OR CARE OR CURE)) AND TIABSU("MOTOR NEURON[*1]" NEAR/3 (DISEASE OR DEGENERATION OR SYNDROME OR DISORDER) OR MND OR ALS OR "lateral sclerosis")) OR ((MAINSUBJECT.EXACT("Motor neurone disease") OR MAINSUBJECT.EXACT("Amyotrophic lateral sclerosis")) AND MAINSUBJECT.EXACT("Drug therapy")) OR MESH.EXACT.EXPLODE("Motor Neuron Disease -- drug therapy")) NOT stype.exact("Other Sources"))	Allied & Complementary Medicine	Add notes... Character limit 500	2025 August 08

Cancel Save

[Modify Search](#) [Create alert](#) [Create RSS feed](#) [Get link](#) [Export Results](#) Processing Results...

[Export Results](#) Results requested on Aug 08, 2025

**When ready, Export Results will become an active link to the final file**



# Support Resources

# ProQuest Support resources

- **ProQuest Platform Search Syntax Guide**

- <https://proquest.libguides.com/proquestplatform/tips>

- **Export results:** [https://www.proquest.com/help/academic/Export\\_Results.html](https://www.proquest.com/help/academic/Export_Results.html)

- <https://support.proquest.com/s/article/Search-Results-Export-for-Systematic-Reviews>

- <https://support.proquest.com/s/article/How-can-I-export-all-my-search-results-in-ProQuest>

- **ProQuest Research Assistant**

- <https://support.proquest.com/s/article/ProQuest-Research-Assistant-FAQs>

# Session Objectives Summary

**In this session, you have learned how to**

- Apply ProQuest basic and advanced search features in AMED with some applications
- Use the AMED Thesaurus
- translate searches from OVID to ProQuest

Your feedback is important!

We hope you are willing to provide your feedback about the webinar (1<sup>st</sup> line) and the trainer (2<sup>nd</sup> line)



English 

How satisfied are you with your recent experience?



Very Satisfied



Satisfied



Neutral



Dissatisfied



Very Dissatisfied



How satisfied are you with the representative who assisted you?



Very Satisfied



Satisfied



Neutral



Dissatisfied



Very Dissatisfied



Please provide any additional comments or feedback.

Your feedback is  
important!

At the end of the session you can use  
the link:

**<https://tinyurl.com/NHSWAmedPQ1>**

**Or the QR Code →**





Thank you

Questions?

[daniela.cason@clarivate.com](mailto:daniela.cason@clarivate.com)

**About Clarivate**

Clarivate is the leading global information services provider. We connect people and organizations to intelligence they can trust to transform their perspective, their work and our world. Our subscription and technology-based solutions are coupled with deep domain expertise and cover the areas of Academia & Government, Life Sciences & Healthcare and Intellectual Property. For more information, please visit [clarivate.com](https://www.clarivate.com)

**© 2023 Clarivate**

Clarivate and its logo, as well as all other trademarks used herein are trademarks of their respective owners and used under license.

# Appendix

- ~ Summary of Basic Search Features
- ~ Standard Post processing options
- ~ My Research options



# Summary of Basic Search features

# Search Basics - ProQuest Platform defaults

## Variants automatic retrieval

- **Plurals**    Child ↔ Children
- **Comparative adjectives**  
Tall ↔ taller ↔ tallest
- **US/UK spellings**  
Estrogen ↔ oestrogen
- **Duplicate removal**
- These settings can be de/activated in the **Search forms** or in **Preferences/My Research**

## PERMANENT DEFAULTS

### Searching more than one term

SKIN CANCER = SKIN **AND** CANCER

“SKIN CANCER” = phrase

The *Exact Quote* marks “ ”

deactivate the **variants retrieval**

**also x single words “LARGEST”**

# Truncation

Symbol	Description	Example
*	<p><b>Truncation character (*)</b> - retrieves variations of the search term. Use the truncation character at the end or in the middle of search terms.</p> <p><b>Standard truncation (*)</b> retrieves up to <b>5 more characters</b>.</p>	<p><b>farm*</b> Finds: farm (farms) farmer, farming</p>
[*n]	<p><b>Defined truncation [*n]</b> is used to denote up to how many characters you want to truncate. It replaces up to the number of characters specified, for example <b>[*7]</b>. Maximum number that can be entered is 20.</p>	<p><b>nutr[*10]</b> Finds: nutrition, nutrient, nutrients, nutraceutic, nutraceuticals</p>

# Proximity operators

Operator	Description
<b>PRE</b> <b>NEAR</b> <b>P/#</b> <b>N/#</b>	<b>Proximity Operators</b> - when used alone, retrieve the search terms if separated by <b>maximum 4</b> intervening words. Adding a number after the slash / changes the default nr of 4 words to less or more. <b>PRE</b> keeps the exact order of the terms <b>NEAR</b> retrieves the terms in any order

## Examples

**CANCER NEAR/2 RESEARCH**

Finds: **Research** on **Cancer**,  
**Cancer** defeated by **Research**

**SKIN PRE/0 CANCER**

Finds: **skin cancers** but not  
**Cancer** of the **skin**

**SKIN NEAR/2 CANCER**

Finds also: **Cancer** of the **skin**

# Limiting the Search to fields

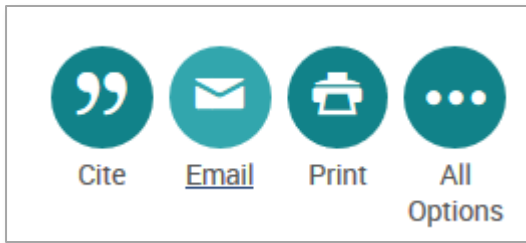
- Field code(s) first, search terms in parentheses
  - **TITLE(CANCER RESEARCH)**
- More than one field:
  - **AUTHOR(FOWLER) AND PUBLICATION(NURSING)**
- I want to search the same term in more than one field ( , = or)
  - **TITLE,SUBJECT(ASTHMA)**
  - **TIAB(ASTHMA AND DRUG N/3 THERAPY)** *(more combined labels: TIABSU, TISU)*



# Standard post-processing options

# Results- tool bar

PostProcessing results top features in the Results page and Docview page



### Cite

Items selected: 2  Deselect items when done

Citation style: APA 6th - American Psychological Association, 6th Edition

Select then **copy and paste** the citations into your document or:

[Email](#) [Print](#) [Download](#)

Boxhoorn, S., Lopez, E., Schmidt, C., Schulze, D., Hänig, S., Cholemkery, H., & Freitag, C. M. (2019). Attention as neurocognitive endophenotype of ADHD across the life span: A family study. *European Archives of Psychiatry and Clinical Neuroscience*, 269(6), 627-644. doi:http://dx.doi.org/10.1007/s00406-019-00993-3

Potvin, S., Charbonneau, G., Juster, R., Purdon, S., & Tourjman, S. V. (2016). Self-evaluation and objective assessment of cognition in major depression and attention deficit disorder: Implications for clinical practice. *Comprehensive Psychiatry*, 70, 53-64. doi:http://dx.doi.org/10.1016/j.comppsy.2016.06.004

### Email

Items selected: 2  Deselect items when done

**Required \***

Content: (where available) Citation, abstract, indexing

Bibliography:  Include bibliographic citations at the end

Citation style: APA 6th - American Psychological Association, 6th Edition

Include:  Recent searches  Cover page/header  Table of contents  Document numbering

**Email addresses: \***

Email addresses entered here will only be used to send your email. Use a comma or semicolon to separate email addresses. Each recipient will see their own email address only.

**Your name: \***

### Print

Items selected: 2  Deselect items when done

Content: (where available) Citation, abstract, indexing

Bibliography:  Include bibliographic citations at the end

Citation style: APA 6th - American Psychological Association, 6th Edition

Include:  Recent searches

Page break:  Insert page break after each document

Estimated size: 3 pages

### All save & export options

**MOST POPULAR**

- Cite
- Email
- Save to My Research

**CITATION EXPORT**

- RefWorks
- EndNote
- RIS
- Citavi, Mendeley, etc.
- NoodleTools
- EasyBib

**OTHER OPTIONS**

- Request items
- Print
- PDF
- XLS
- RTF
- TXT
- Microsoft Excel Format
- Microsoft Word Format
- Text only

# Saving Results options

## All save & export options

3 Selected items

**MOST POPULAR**

- Cite
- Email
- Save to My Research

**CITATION EXPORT**

- RefWorks
- EndNote
- RIS
- Citavi, Mendeley, etc.
- NoodleTools
- EasyBib

**OTHER OPTIONS**

- Request items
- Print
- PDF
- XLS
- RTF
- TXT
- Microsoft Excel Format
- Microsoft Word Format
- Text only

Close

If more than one page of results is needed, select all the documents in one page, move to the next, select more. The selection of the previous page(s) will be kept in "Selected items"

Select 1-50

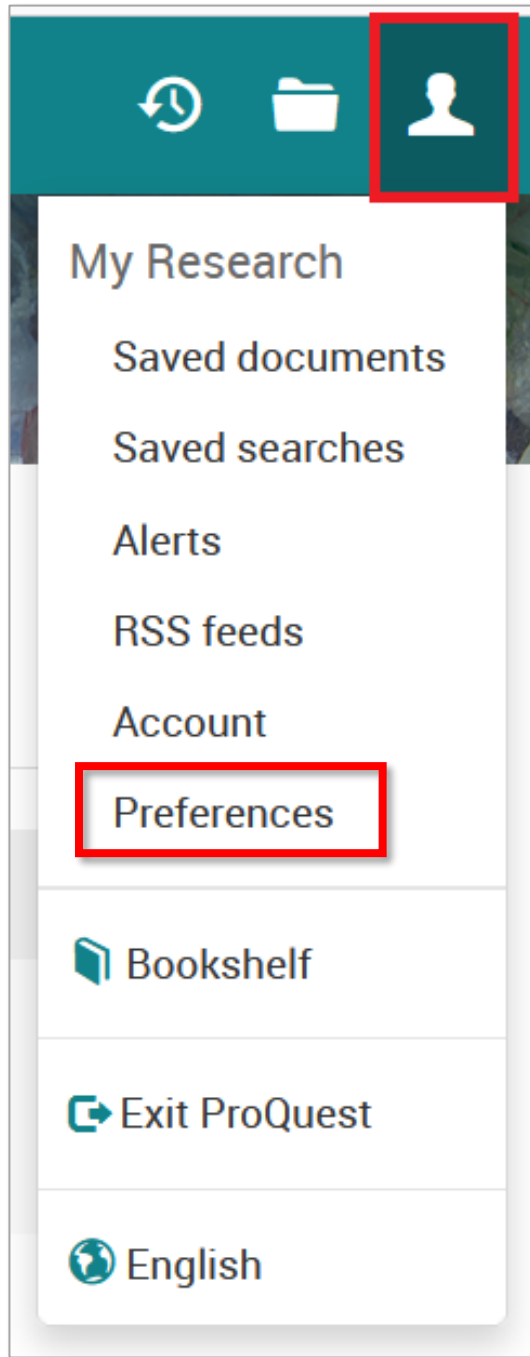
3 Selected items

All save & export options

- 1 Drug-induced asthma: a review. Ribon, A; Parikh, S; National Library of Med. Scholarly Journal
- 2 IgE-mediated allergic reaction in drug. Kitani, H; Kajimoto, K; Sugimoto, K; Mifune. Scholarly Journal
- 3 Celecoxib, a highly selective COX-2 in. Martín-García, C; Hinojosa, M; Berges, P; Ca. (2003): 20-25. Scholarly Journal



# My Research options



## My Research: Preferences

# My Research

Documents (142) Searches (47) Alerts (3) RSS feeds (0) Widgets Account

## Preferences

General interface Database shortcuts

View

Account information  
Preferences  
RefWorks settings

Specify ProQuest settings and preferences that stay in effect whenever you're signed into My Research.

### Interface settings and display

#### Interface language

Language:

### Dates

Choose your preferred format for displaying dates throughout the ProQuest interface.

Show dates as:

#### Date format

**Possibility for the single user to customize their own search experience**

### Results display

Display  results per page

Sort results by:

Choose whether you want to display duplicate items from different databases within ProQuest:

Exclude duplicate documents ?

- Results per page
- Default sort options
- Deduplication

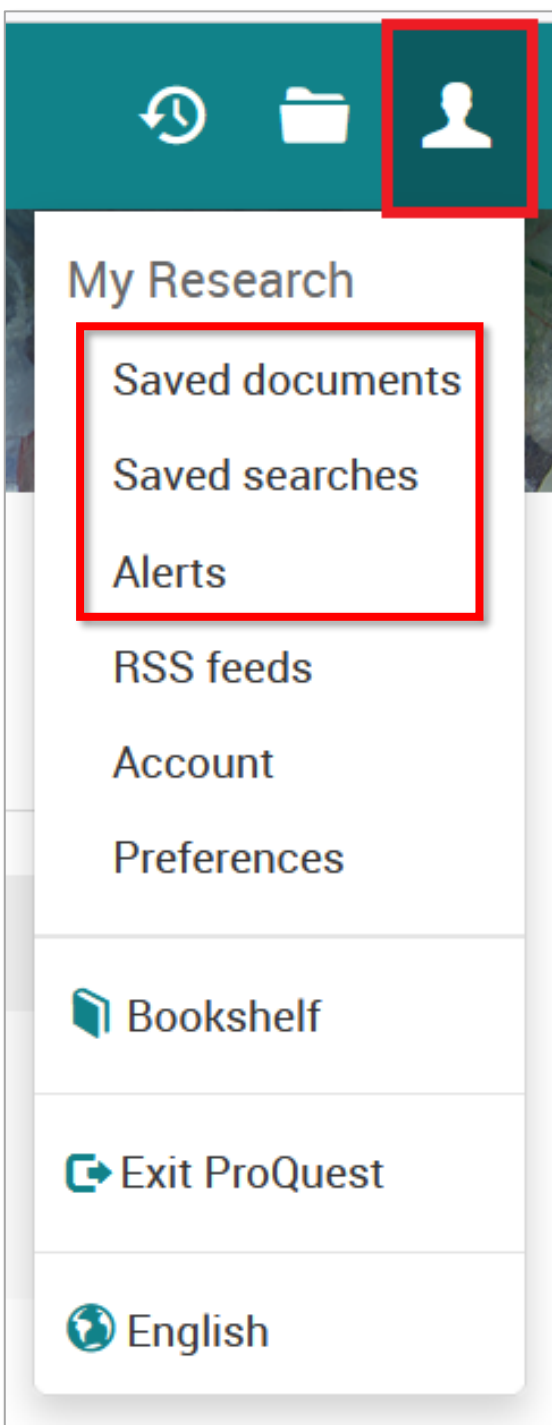
### Search customization

Include US and UK spellings ?

Include plurals, comparatives(*taller*), and superlatives(*tallest*) ?

Enable autocomplete

#### Search default variants



## My Research: Saving Documents, Searches and Alerts

# Like your results? Save your strategy!

- **Save your search** to reuse or **Create an alert** to run automatically and email matching records
- Two ways to create: **1 - From Results page**

MEDLINE®

MJMESH.EXACT.EXPLODE("ABDOMINAL NEOPLASMS" lnk diagnosis)

5,108 results

Modify search Recent searches **Save search/alert**

Sorted by  
Relevance

Limit to

Select 1-50

[Levolateral upper abdominal tumor].  
Alternate title: Linksseitiger Oberbauchtumor.  
Roth, A; Frick, P; National Library of Medicine. *Praxis* Vol. 54, Iss. 45, (November 11, 1965): 1323-1326.

Save search  
Create alert  
Create RSS feed  
Get search link

Citation

# Like your results? Save your strategy!

- **Save your search** to reuse or **Create an alert** to run automatically and email matching records
- Two ways to create: **2 - From Recent searches**

Hover over the arrow next to the appropriate set

Search	Databases	Results	Save search/alert	Other actions
<a href="#">⊕ MJMESH.EXACT.EXPLODE("ABDOMINAL NEOPLASMS" Ink diagnosis)</a>	MEDLINE®	5,108*	Save search/alert ▼	Other actions ▼

Removed from your search and from your result count.



- Save search
- Create alert
- Create RSS feed

# Menu-driven creation

- Alert wizard is 1 page set up, 4 steps!

- Add alert *name*

- Select recipient(s)

- Update subject line

## Create alert

Create and schedule alerts to deliver new documents matching your search as they become available in ProQuest.

Create a [My Research](#) account to modify, delete, or view all of your alerts.

**Required \***

### Step 1-Review search details

Name this alert: \*

Searched for: MJMESH.EXACT.EXPLODE("Abdominal Neoplasms" Ink diagnosis)

Databases: MEDLINE®

### Step 2-Define your alert email

Send to: \*   
m

The email address entered here will only be used to send your alert.

Subject:

Message:

# Menu-driven creation

- Additional choices

Newly published is *last 60-90 days ONLY*

- Select frequency

- Select the day

- Consider

Cancel

### Create alert

**Step 3-Define your alert content**

Include search details:  Yes  No

Include highlighting:  Yes  No

Include:

**Step 4-Schedule your alert**

Send:  Daily  Weekly  Monthly  Quarterly

Send on:

Stop after:

You will be able to extend an alert past any end date you specify here.

Send scheduled alert even when no new documents match my search

By entering all required information you consent to its use by ProQuest to enable features and functionality.

# Manage alerts/saved searches in My Research

**My Research**

Documents (139) **Searches (35)** Alerts (1) RSS feeds (0) Widgets Account

**Alerts (1)**

Select items 1-1  Delete selected alerts

<input type="checkbox"/> 1	Alert name:	Abdominal Neoplasms Diagnosis
	Alert ID:	719875
	Frequency:	<b>Weekly</b> until <b>June 05, 2021</b>
	Your email address:	customer@company.co .com
	Searched for:	m MJMESH.EXACT.EXPLODE("Abdominal Neoplasms" Ink diagnosis)
	Databases:	MEDLINE®
	Date created:	2021 April 06
	Date modified:	2021 April 06
	<input type="button" value="Modify alert"/>	<input type="button" value="View results"/> <input checked="" type="button" value="Delete"/>

Select items 1-1  Delete selected alerts