



Access to thousands of current, full text **e-Journals**



Current and reliable **Professional Guidelines**, such as Royal Marsden Manual and iRefer, which are available to all users



Search for health and care information through the national **Database** subscriptions  
Access current **Medicines Information** such as Micromedex and BNF/BNFC



Access to CPD and CME points across different platforms, including **e-Learning** with BMJ Learning modules for professional skills and clinical topics.



National access to **Evidence Summaries** from BMJ Best Practice, Clinical Key, and Clinical Key Nursing

The NHS Wales e-Library for Health

(<https://elh.nhs.wales/>) manages the

national digital e-resources accessed by all

NHS Wales Staff and other authorised users.



Access to the e-Library is instant from NHS Wales network.

Working from home or Public Wifi?

Just sign-in with OpenAthens

## What is the NHS Wales e-Library for Health?

**e** is for **equitable, extensive, and evidence-based**. As a result of the establishment of **Health Education and Improvement Wales** in October 2018 a substantial investment was made to increase the number and type of e-resources available to NHS Wales. This has allowed for **equitable access** to an extensive range of quality e-resources for all NHS Wales.



## Who can use the e-Resources?

Access a full list of authorised users here:  
<https://elh.nhs.wales/about-us/authorised-users/>



### Primary users

All staff employed by NHS Wales and organisations in Wales individually contracted to provide NHS Services

All staff employed/hosted/or working directly with Health & Social Care and Education & Public Service Department of Welsh Government

### Secondary users

People employed to work directly with but aren't employed by NHS Wales

### Tertiary users

Members of the public accessing those e-resources that freely available and openAccess evidenced based

# What does the e-Library look like?

Next, we'll start our brief tour around the e-Library website.

We think of our website as your virtual space. It's been developed to be flexible, intuitive, and accessible to all new-users as well as our regularly returning ones.

We feel this approach encourages a sense of NHS Wales community and building confidence towards applying Evidence Based Practice for both clinical and non-clinical professions.

In this short tour we'll cover the following areas:



How access e-resources on and off the NHS Wales network



How to find what you're looking for



How to find out more about the different e-resources



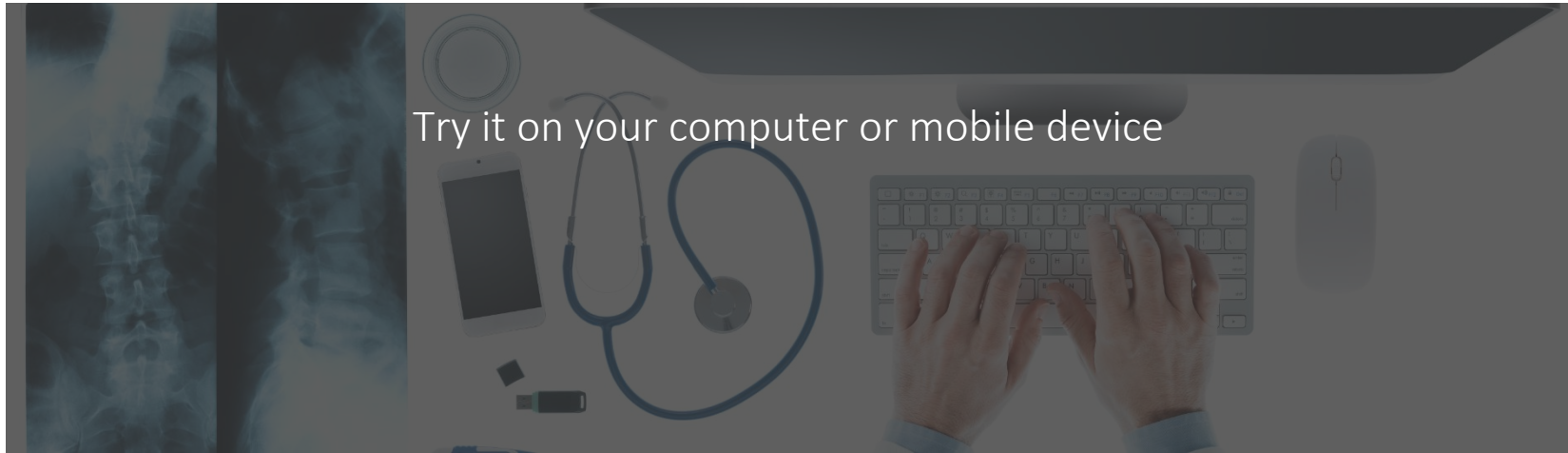
NHS WALES DIGITAL SOURCE FOR KNOWLEDGE & EVIDENCE



Where do I start?



https://elh.nhs.wales/



Try it on your computer or mobile device

# How Do I Get Access?

## IP Authentication

From a recognised NHS Wales site, your IP address will be recognised and you will be automatically granted access to the various e-Library resources

## OpenAthens

If you are working from outside of the network, you can still access all of the e-Library resources with a simple log in to OpenAthens



## NHS Wales e-mail address

If you have an NHS Wales e-mail address, you can simply use the top option and log in using your e-mail address and password

## OpenAthens

If you do not have an NHS Wales email address, you can still use this option to gain access. If you do not yet have an OpenAthens account, you can complete the short registration form, and following approval from the admin for your Health Board, you will be able to log in using a non-NHS Wales email address instead



## Thousands of full text articles

LibrarySearch is a discovery tool that can search all digital and physical holdings across NHS Wales at an article level



## Browsing for e-journals?

If you're looking for a specific title, or would like to use more advanced search functionality, you can also navigate to the LibrarySearch home page from the Reference Room drop down menu





## What are Evidence Summaries

Evidence Summaries are easy to use and contain evidenced and reliable information. Whether you use them at “point of care” for patients, to support Multi-discipline teams, or if you use them for research, these e-resource tools are great for everyone



ClinicalKey®



English CME/MOC Login

Search for conditions, procedures, drugs, and more

All Types

Search...



Browse

Books Journals Clinical Overviews Drug Monographs ...

Tools

Clinical Calculators



## Take your evidence To-Go

Download the apps for BMJ Best Practice and Clinical Key for you work or personal devices



Lyfrgell Iechyd  
Library for Health

**Ageinfo**

**Allied & Complementary Medicine (AMED)**

**Applied Social Sciences Index & Abstracts (ASSIA)**

**British Nursing Database**

**The Campbell Collection**

**Cochrane Library**

**Education Resources Information Centre (ERIC)**

**Embase: Excerpta Medica**

**EMCare**

**Europe PMC**

**Healthcare Administration Database**

**Health Management Information Consortium (HMIC)**

**Library, Information Science and Technology Abstracts (LISTA)**

**Maternity and Infant Care Database (MIDIRS)**

**MEDLINE**

**Micromedex Healthcare Series**

**OVID Collection**

**Physiotherapy Evidence Database (PEDro)**

**ProQuest Dialog**

**PsycINFO**

**PubMed**

**Social Care Online**

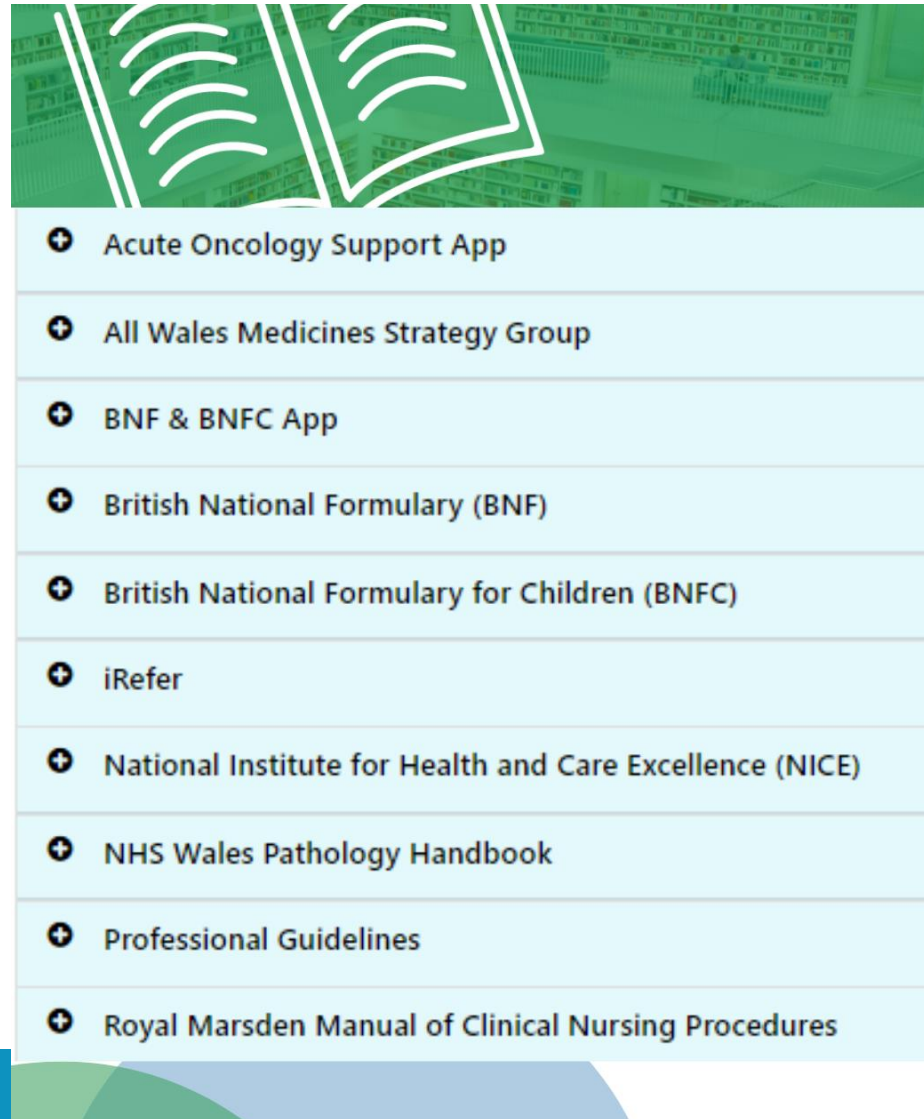
**Transfusion Evidence Library**

**Travel Health Pro**

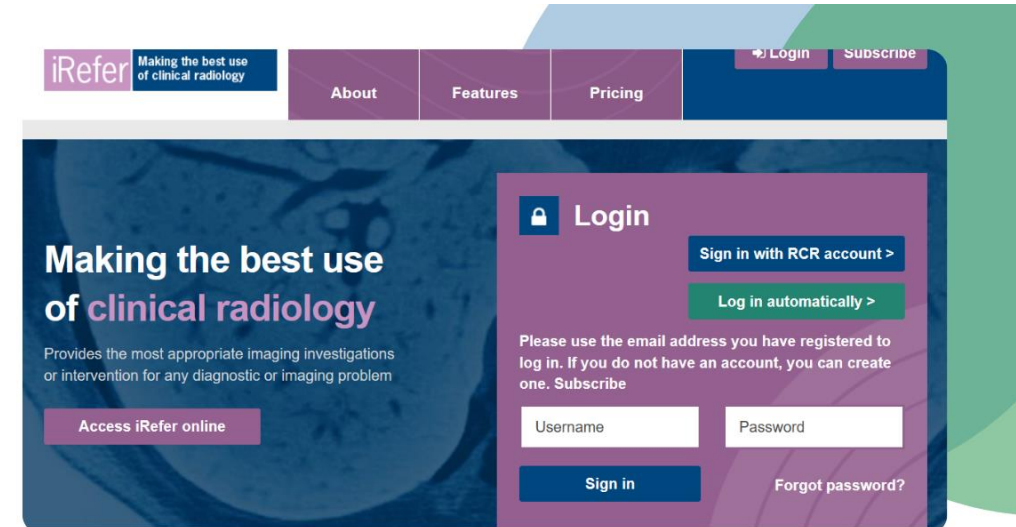
**TRIP Pro**

**WISDOM**

Our range of databases are there to meet the needs of the diverse profession and specialities across NHS Wales. Click on the database name to learn more about what subjects are included.



- [+ Acute Oncology Support App](#)
- [+ All Wales Medicines Strategy Group](#)
- [+ BNF & BNFC App](#)
- [+ British National Formulary \(BNF\)](#)
- [+ British National Formulary for Children \(BNFC\)](#)
- [+ iRefer](#)
- [+ National Institute for Health and Care Excellence \(NICE\)](#)
- [+ NHS Wales Pathology Handbook](#)
- [+ Professional Guidelines](#)
- [+ Royal Marsden Manual of Clinical Nursing Procedures](#)



**iRefer** Making the best use of clinical radiology

About Features Pricing Login Subscribe

## Making the best use of clinical radiology

Provides the most appropriate imaging investigations or intervention for any diagnostic or imaging problem

[Access iRefer online](#)

**Login**

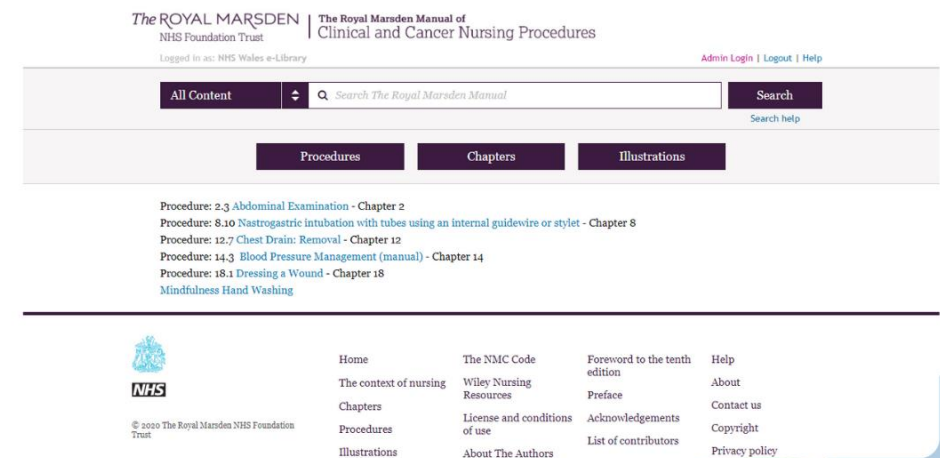
[Sign in with RCR account >](#)

[Log in automatically >](#)

Please use the email address you have registered to log in. If you do not have an account, you can create one. [Subscribe](#)

Username  Password

[Sign in](#) [Forgot password?](#)




The ROYAL MARSDEN NHS Foundation Trust | The Royal Marsden Manual of Clinical and Cancer Nursing Procedures

Logged in as: NHS Wales e-Library [Admin Login](#) | [Logout](#) | [Help](#)

All Content  [Search](#)

[Procedures](#) [Chapters](#) [Illustrations](#)

Procedure: 2.3 Abdominal Examination - Chapter 2  
 Procedure: 8.10 Nasogastric intubation with tubes using an internal guidewire or stylet - Chapter 8  
 Procedure: 12.7 Chest Drain: Removal - Chapter 12  
 Procedure: 14.3 Blood Pressure Management (manual) - Chapter 14  
 Procedure: 18.1 Dressing a Wound - Chapter 18  
[Mindfulness Hand Washing](#)

 Home The context of nursing Chapters Procedures Illustrations

The NMC Code  
Wiley Nursing Resources  
License and conditions of use  
About The Authors

Foreword to the tenth edition  
Preface  
Acknowledgements  
List of contributors

Help  
About  
Contact us  
Copyright  
Privacy policy

© 2020 The Royal Marsden NHS Foundation Trust

Access professional guidelines, including iRefer and Royal Marsden, which provide high quality evidence and guidance for all users, not just those within particular specialities.



## Looking for CPD

All NHS Wales staff can benefit from the wide range of modules available in BMJ Learning

## Treat your patients with confidence




### Free Coronavirus (covid-19) courses

In response to the evolving, serious challenges posed by Covid-19, we have compiled our most relevant online courses for doctors, nurses and medical students to support your efforts in tackling the pandemic.

## Continue learning



Workload and time management

Last accessed: 18 Sep 2020



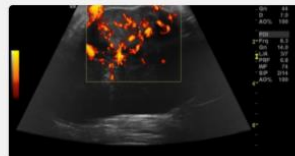
The art of effective feedback

Last accessed: 22 May 2020



Preparing for your first FY1 post

Last accessed: 18 Mar 2020



Lumps, bumps, and sarcomas: a guide

Last accessed: 13 Sep 2019



[Home](#)

You are currently not logged in to BMJ Learning.

## Croeso / Welcome



GIG  
CYMRU  
NHS  
WALES

Gwasanaeth  
Gwybodeg  
Informatics  
Service



Lyfrgell Iechyd  
Library for Health

Mae BMJ Learning yn darparu addysg feddygol barhaus o ansawdd uchel, yn seiliedig ar dystiolaeth, ac yn ymdrin â phynciau clinigol, sgiliau proffesiynol, a datblygu gyrfa.

Ewch i'r [dudalen glanio GIG hon](#) i weld yr ystod lawn o adnoddau BMJ sydd ar gael.

BMJ Learning provides continuing medical education that is high-quality, evidence-based and covers clinical topics, professional skills and career development.

Visit the [NHS landing page](#) to view the full range of BMJ resources available.

## Mwyaf poblogaidd / Most popular

[Reducing the risk of hyponatraemia when administering intravenous fluids to children](#)

[Lumps, bumps, and sarcomas: a guide](#)

[Step by step: Investigating the asymptomatic patient with abnormal liver blood tests](#)

[Clinical pointers: managing the menopause](#)

[Fever in under 5s: putting NICE guidelines into practice](#)

## Newydd a diweddar / New and updated

[Ask an expert: Common problems in new babies in primary care](#)

[Clinical pointers: Vitamin D deficiency in adults in primary care](#)

[Step by Step: How to manage acute asthma in adults in primary care](#)

[Hospital presentations: Memory loss](#)

[Hospital presentations: Dysuria](#)



## Create a portfolio

Use your NHS Wales OpenAthens account to save your progress.

There are many modules, both clinical and non-clinical, that are aimed to support NHS staff during COVID and can be found in the "COVID-19 HUB"



## How To

Our How To area is intended for when you ask yourself “How do I...” about the e-Library or e-resources.

Find tutorials to help you navigate LibrarySearch, Copyright Guidance, and many supplier training videos and webinars



## Publishing



### BMJ Case Reports

BMJ Case Reports look to publish cases with valuable clinical lessons. Common cases that present a...

[More](#)

### YouTube Writing for Publication



## Getting Published

Have you ever considered publishing your work? Why not consider submitting a Case Report in BMJ Case Reports. Watch the MA Health Care Writing for Publication webinar for tips and help for writing articles.

Why not practice by writing a blog review of articles from your journal club?



## New and developing areas

We now offer a Subject Guide section provides quick access links to resources on particular subjects. Get in touch if you want to suggest one for your area of work

In the Common Room you'll find evidence-based podcasts, online discussions, an e-Journal blog, and more

## Subject Guides



### A-Z Subject Guides for NHS Wales Health and Care Professionals

### Clinical Classifications

Tags:PHW,Public Health Wales,RCN,NWIS,Digital,terminology,Biomedical semantics,classification,Clinical classifications,Clinical code,data analysts,diagnostic,FHIR,health informatics,HL7,HRGs,ICD10,ICD11,ICF,ICHI,LOINC,Medical informatics,Nosology,OPCS4,SNOMED CT,standards,statistical analysis,Wales reference data service,WHO,WRDS

### Coronavirus COVID-19

Tags:Severe acute respiratory syndrome,Coronavirus,covid,covid-19,infectious diseases,Novel,pandemic,SAGE,sars-cov-2,WHO,World Health Organisation

## Common Room



### e-Library Podcasts

Title	Summary
Business Analysts: Making Healthcare IT Dreams Come True	
The Next Generation of Informatics: Welsh Institute of Digital Information Apprenticeships	
Existence: The importance of accessing and using the right evidence for decision making	
Clinical Coding's Brave New World: How digital tools are transforming coding practices	

### LATEST PODCAST



Find the full catalogue of e-Library Podcasts here.



SUBMIT A BLOG/JOURNAL REVIEW

Or email us at [elibrary@wales.nhs.uk](mailto:elibrary@wales.nhs.uk) with your submission.

Name \*

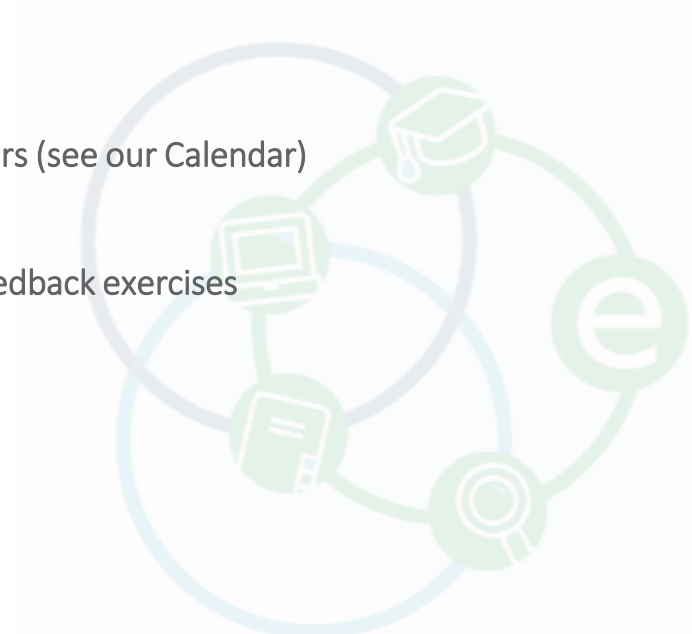
LATEST BLOG

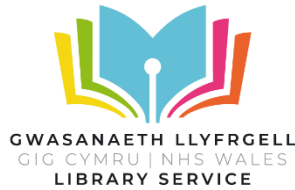
## News and events



Check out the latest on:

- Important updates about the e-Library
- Bulletins and content lists from publishers
- The e-Library newsletter
- Service Interruptions
- Training events and webinars (see our Calendar)
- New e-resources added
- How to take part in user feedback exercises





## Popular FAQ's

### I'm signed into OpenAthens – Why do I need to sign into LibrarySearch too?

LibrarySearch, the NHS Wales discovery tool, will prompt you to sign-in when you're not on the NHS Wales network.

LibrarySearch can help you find resources that may be physical in local libraries within NHS Wales, even if you prefer to search on GoogleScholar.

Register with your local library service to receive a Library Barcode Number and password.

For more info, visit: <https://elh.nhs.wales/reference-room>



The e-Library works closely with library and information's services across NHS Wales, including:

NHS Wales Library Service  
Public Health Wales  
Welsh Government – Information, Library and Archive Services.

We would strongly encourage all users to approach their local library, knowledge and information services to access local subscriptions, training opportunities, literature searching services, and to help source books and articles not currently available, as well as advice on Copyright.



## What happens next?

- There are a lot of upcoming supplier-led **workshops and webinars** aimed at our NHS Wales users. Check out what's coming up in the e-Library **Calendar**, or have a look for recordings of previous sessions you may have missed in our **How-To** section, full of videos from the e-Library and from our suppliers.
- Take part in our Padlet discussion to share your views about key topics. You can find this in our **Common Room**, along with the Digital Healthcare Wales **podcast series**
- Request a live demonstration for you and your peers



Start your tour of  
the NHS Wales  
e-Library

<https://elh.nhs.wales>

Need some  
help?

Use the contact forms  
directly on the website,  
or just email  
[elibrary@wales.nhs.uk](mailto:elibrary@wales.nhs.uk)

Stay current

Follow us on Twitter  
and Facebook  
[@NHSWaleselib](https://twitter.com/NHSWaleselib)  
And check out our  
news section:  
[https://elh.nhs.wales/  
news1/](https://elh.nhs.wales/news1/)



Mynediad at filoedd o **e-Gyfnodolion** testun-llawn cyfredol



**Canllawiau Proffesiynol** cyfredol a dibynadwy, megis Royal Marsden Manual ac iRefer, sydd ar gael i'r holl ddefnyddwyr



Chwilio am wybodaeth iechyd a gofal trwy'r tanysgrifiadau **Cronfa Ddata** genedlaethol Mynediad at **Wybodaeth am Feddyginiaethau** cyfredol megis Micromedex a BNF/BNFC



Mynediad at bwyntiau Datblygiad Proffesiynol Parhaus ac Addysg feddygol Barhaus ar draws platformau gwahanol, gan gynnwys **e-Ddysgu** gyda modiwlau BMJ Learning ar gyfer sgiliau proffesiynol a phynciau clinigol.



Mynediad cenedlaethol at **Grynodebau Tystiolaeth** o BMJ Best Practice, Clinical Key, a Clinical Key Nursing

Mae e-Lyfrgell Iechyd GIG Cymru

(<https://elh.nhs.wales/>) yn rheoli'r e-adnoddau digidol cenedlaethol y mae holl Staff GIG Cymru a defnyddwyr awdurdodedig eraill yn eu cyrchu.



Mae mynediad i'r e-Lyfrgell ar unwaith o rwydwaith GIG Cymru. Gweithio gartref neu drwy Wi-Fi Cyhoeddus? Mewngofnodwch trwy **OpenAthens**